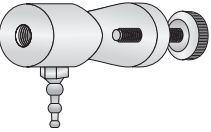
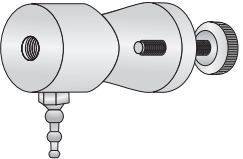
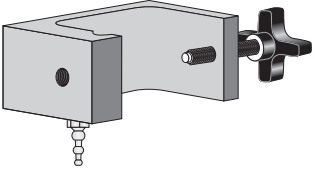
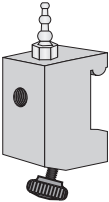


E Cleaning Recommendations

1. Do not immerse gauge clamp in any liquid.
2. Gauge Clamp Cleaning: Wipe exterior of the gauge clamp with bactericidal or virucidal wipe.

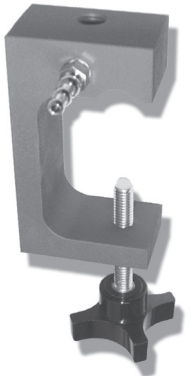
F Product Specifications

	Model #	BE 148-5-1
	Type	Gauge Pole Clamp — For 3/4" diameter poles
	Use	Reusable
	Gauge Connection	1/4" NPT
	Tubing Connection	Small Bore Tubing
	Clamp Body Dimensions	Length — 2.7 in. Diameter — 1.3 in.
	Materials	Anodized Aluminum
	Packaged	Individually
	Model #	BE 148-5-2
	Type	Gauge Pole Clamp — For 3/4" to 1 1/2" diameter poles
	Use	Reusable
	Gauge Connection	1/4" NPT
	Tubing Connection	Small Bore Tubing
	Clamp Body Dimensions	Length — 3.2 in. Diameter — 1.5 in.
	Materials	Anodized Aluminum
	Packaged	Individually
	Model #	BE 148-5-2.5
	Type	Gauge Clamp — For equipment requiring 1" to 2 1/2" opening
	Use	Reusable
	Gauge Connection	1/4" NPT
	Tubing Connection	Small Bore Tubing
	Clamp Body Dimensions	Length — 4.5 in. Width — 2.5 in. Height — 1.5 in.
	Materials	Anodized Aluminum
	Packaged	Individually
	Model #	RB 004
	Type	Gauge Rail Clamp — Mounts rear 1/4" NPT threaded gauges securely to Fairfield-style rails
	Use	Reusable
	Gauge Connection	1/4" NPT
	Tubing Connection	Small Bore Tubing
	Clamp Body Dimensions	Length — 1.5 in. Width — 1.5 in. Height — 2.6 in.
	Materials	Anodized Aluminum
	Packaged	Individually

Gauge Clamps

*Installation &
Usage Directions*

BE 148-5-1
BE 148-5-2
BE 148-5-2.5
RB 004



Visit iiimedical.com/symbols.pdf
for the Glossary of Symbols used in
Instrumentation Industries, Inc. labeling.

Instrumentation Industries, Inc.

2990 Industrial Blvd. • Bethel Park, PA 15102

US Toll Free: 1-800-633-8577

Business: 1-412-854-1133

US Toll Free Fax: 1-877-633-8661

Fax: 1-412-854-5668

E-mail: sales@iiimedical.com

iiimedical.com

Reusable

- Not made with Natural Rubber Latex
- Not made with Di(2-ethylhexyl) phthalate (DEHP)
- Not made with Bisphenol A (BPA)



A Product Description

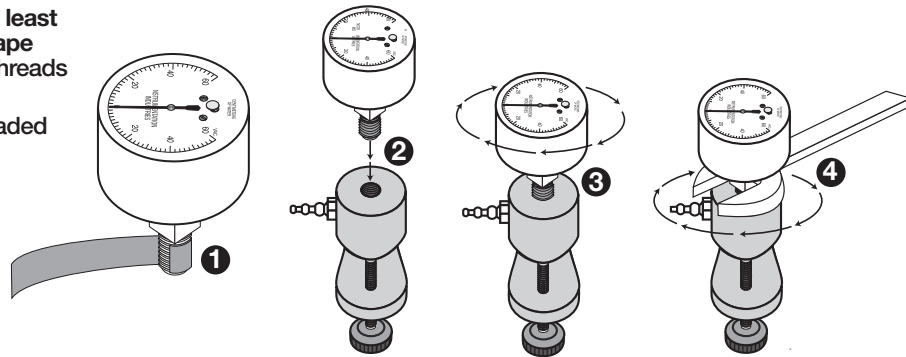
Instrumentation Industries, Inc. BE 148/RB 004 Series Gauge Clamps are accessories to NS Series Vacuum/Pressure Gauges (Airway Pressure Monitors) which monitor patient airway pressure.

B Notes

- HANDLE the gauge with care. Dropping or jarring the gauge will damage it.
- ALWAYS use a wrench to tighten a Gauge with a 1/4" NPT fitting into position.
- NEVER apply force on the gauge case to tighten into position.

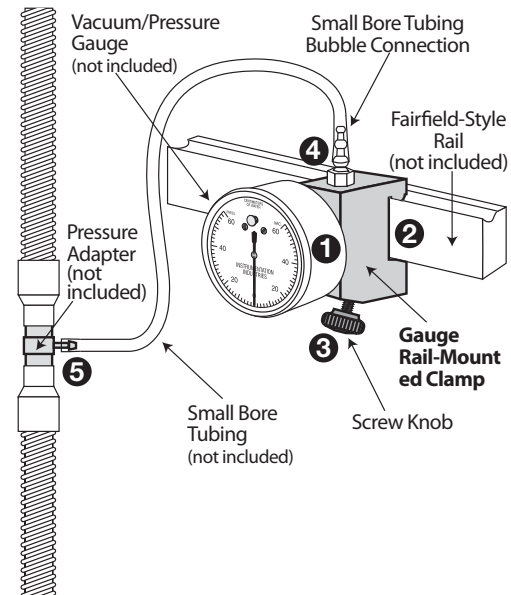
C 1/4" NPT Gauge Installation Directions

1. Prior to installation, at least two layers of teflon tape MUST be applied to threads of gauge fitting. ①
2. Insert gauge into threaded hole of clamp. ②
3. HAND TIGHTEN gauge. ③
4. Place a wrench on the square fitting next to the gauge case and tighten. ④



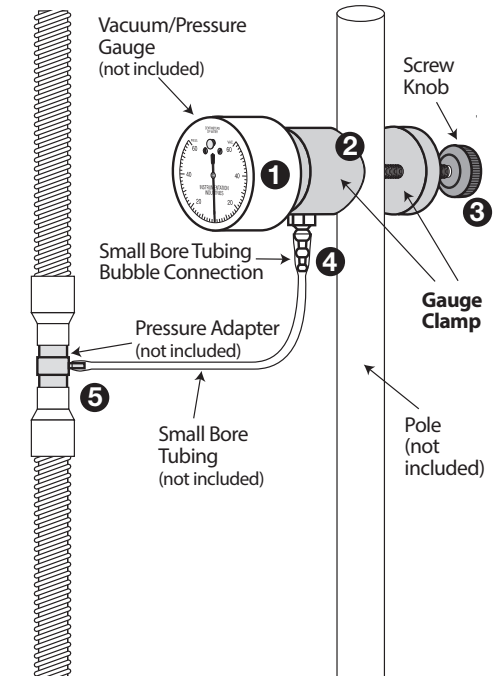
D Directions for: Gauge Rail-Mounted Clamp RB 004

1. Install Rear Mount 1/4" NPT Vacuum/Pressure Gauge into Gauge Clamp. (see instructions in panel C.) ①
2. Mount Clamp with Installed Gauge to Fairfield-style Rail. ②
3. Tighten Clamp with Installed Gauge by turning Screw Knob. ③
4. Attach a length of Small Bore Tubing to Small Bore Tubing Bubble Connection. ④
5. Attach other end of Small Bore Tubing to Pressure Adapter. ⑤



E Directions for: Gauge Clamps BE 148-5-1 — BE 148-5-2

1. Install Rear Mount 1/4" NPT Vacuum/Pressure Gauge into Gauge Clamp. (see instructions in panel C.) ①
2. Mount Clamp with Installed Gauge to Pole. ②
3. Tighten Clamp with Installed Gauge by turning Screw Knob. ③
4. Attach a length of Small Bore Tubing to Small Bore Tubing Bubble Connection. ④
5. Attach other end of Small Bore Tubing to Pressure Adapter. ⑤



F Directions for: Gauge Clamp BE 148-5-2.5

1. Install Rear Mount 1/4" NPT Vacuum/Pressure Gauge into Gauge Clamp. (see instructions in panel C.) ①
2. Mount Clamp with Installed Gauge to Pole/Equipment. ②
3. Tighten Clamp with Installed Gauge by turning Screw Knob. ③
4. Attach a length of Small Bore Tubing to Small Bore Tubing Bubble Connection. ④
5. Attach other end of Small Bore Tubing to Pressure Adapter. ⑤

